

# WICKLOW MOUNTAIN VIEWS

THE NEWSLETTER OF WICKLOW UPLANDS COUNCIL

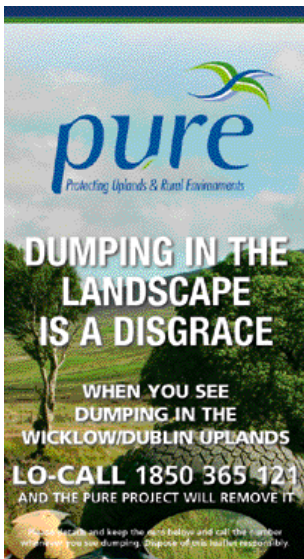


SUMMER 2007

Wicklow Mountain Views –  
The Newsletter of  
Wicklow Uplands Council

Issue number 16:  
Summer 2007

Published by:  
Wicklow Uplands Council Ltd  
Editor: Lenka Mulligan



## ADVANCE NOTICE!

### COMMUNITY AND LANDSCAPE CONFERENCE

**23/24 OCTOBER 2007  
IN COUNTY WICKLOW**

Organised by  
Wicklow Uplands Council

An opportunity for information  
exchange on statutory/  
non-statutory partnership issues

## LETTER FROM THE CHAIR

It is my pleasure once again to write to you as chair of Wicklow Uplands Council.



The 2007-2013 National Rural Development Programme and more specific strategies for countryside recreation, forestry and tourism present many opportunities to a sustainable development NGO such as ours. As new national, regional and local plans and opportunities surface, we are taking care to welcome change and new possibilities. My wish is that this edition of our newsletter will provide useful information as to how we are responding to these challenges.

Once again, we acknowledge the core funding support of the Heritage Council and Wicklow County Council and of our Business Forum members. In a context that makes limited statutory provision for sustainable development NGOs, these contributions to our base costs enable us to exist and to leverage project income in multiples of these core funding provisions. Likewise, our relationships with Wicklow Rural Partnership, National Parks and Wildlife Service, Coillte, the Forest Service, National Trails Office etc are evidence of our commitment to share resources and ideas to the maximum degree. Our public representatives, notably Minister Dick Roche TD, are also very important to us.

I believe that I can say that our board of directors and staff have made real progress in past months, evidence of which is set out in this newsletter. Our work on trail development and access has been central. As an organisation that works on a consensus basis, we have particular challenges in moving forward on any issue. This means that we aim never to take a vote and all the time look for the middle way that includes all voices and opinions. Of course it would be much easier to put a particular issue to a vote, accept the majority view and move on. That course however leads to winners and losers and we don't want to go there. An example of this

way of working is our consensus response to Philip Maguire, a board member and farmer, who asked us to reflect on future ways to ensure that landowners share in the economic benefits of countryside recreation. Philip's intervention prompted another board member, Joe Walker, to suggest that we agree a set of principles on this general issue. I quote them here:

### 1. Providing access for all based on mutual respect

We recognise the benefits for all of a more open countryside.

### 2. Access by consent

We support the concept that public access to private land should only be achieved with the goodwill and consent of the landowner.

### 3. Sharing the benefits equitably

Bearing in mind that the landscape of Ireland has been managed for generations, we believe that landowners are entitled to share in the economic and other benefits that accrue from recreational/tourism use of their land.

### 4. Ensuring sustainable development

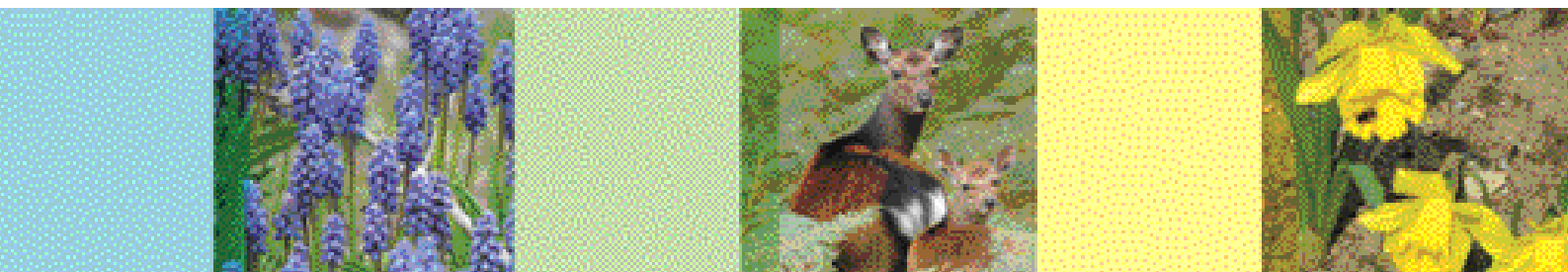
We believe that the sustainable development of the landscape and the State's rural development, tourism and well-being strategies will be best served through wide acceptance of these principles.

We look forward to a lively debate on these principles at our Annual General Meeting and on other occasions.

Finally, I wish to thank our individual and organisational members, our board of directors and staff and all our supporters and friends. Together, we are on an interesting journey on behalf of our beautiful landscape and those who live, work and recreate here.

Yours truly

**DERMOT J. HAND**  
Chair, Wicklow Uplands Council

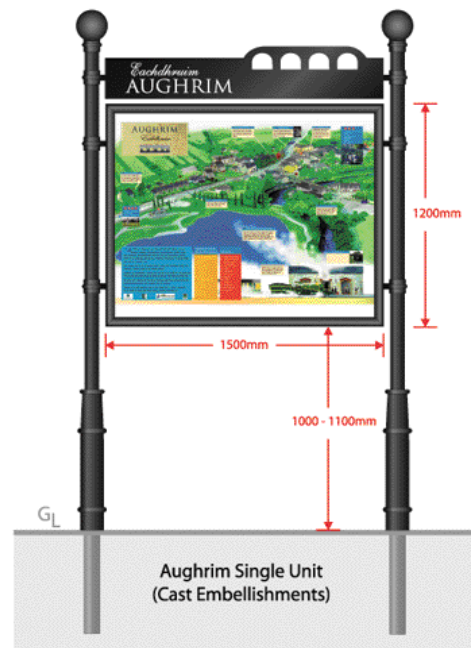


## A NETWORK OF INTERPRETIVE PANELS FOR VILLAGES – A WICKLOW UPLANDS COUNCIL INITIATIVE

The project ambition is to develop a network of information on natural and built heritage in villages in county Wicklow in the form of interpretive panels. The project works on a partnership between village communities, Wicklow County Council and Wicklow Uplands Council. We all recognise the need for providing information on our heritage to both residents and visitors. Best practices in signage production and interpretation are applied to this project and we are hoping to develop an innovative network of signage, which will provide useful heritage information and will promote recreational activities in the area.

The village of Aughrim and town of Blessington are the two pilot sites in this project and the village of Laragh is next to follow. Other potential sites include Rathdrum, Enniskerry, Tinahely, Baltinglass, Dunlavin, Ashford and Roundwood. Our plan is to develop 4 panels by August 2007. Community groups are encouraged to provide information on heritage sites within their area and to take ownership of the panel. The project is partly funded by the Wicklow Rural Partnership Leader+ programme and by the community in each location.

Proposed design for panel in Aughrim.



## SAIVE COFFEY AWARDED HONORARY MEMBERSHIP OF WICKLOW UPLANDS COUNCIL

Saive Coffey was honoured in the company of her sister, Darina, colleagues and friends when she was awarded Honorary Membership of Wicklow Uplands Council at the Council's "Walk and Talk Event" in Glenmalure on 10 March, 2007.

The award was made to Saive in recognition of her unique contribution to Wicklow Uplands Council. She becomes the 2nd only Honorary Member of Wicklow Uplands Council in the 10 year history of the organisation and joins David Rowe – who became the Council's 1st Honorary Member in 2006.

Saive is a longstanding member of both Wicklow Uplands Council and the Wicklow Dublin Mountains Board for many years. Over the years, both of these organisations have benefited enormously for her unique blend of farming expertise, environmental awareness and commitment to sustainable development. Despite the heavy demands on her time and her very active involvement in Wicklow County IFA and Wicklow Rural Partnership, Saive has always made time to participate fully in the affairs of the Council.

In paying tribute to Saive, Dermot Hand, Chair of WUC said that the award is intended to "recognise and honour special people who make a unique contribution to the long-term development of the Council". Saive is well known in Wicklow and around the country for her expertise in farming matters. Commenting on her work with the Council, Dermot complimented Saive on her



Pictured is Saive Coffey receiving a presentation of a silver brooch specially created by Sonya Ewen to mark the occasion.

*"...gentle hand and wise counsel which has enabled us to enhance the uplands environment for the benefit of all our stakeholders. In particular, your work to promote the interests, concerns and aspirations of the farming community has earned you the deepest respect and admiration of all your colleagues on the Board".*

### ANNUAL GENERAL MEETING

Wednesday 20 June 2007 • Glendalough Hotel

7.30pm • Panel meetings to nominate directors.

8.00pm • Annual General Meeting Presentation by participants in Young Observers 2007 Project.

All welcome! Please call 0404 43958 for information about our Community Panel, Farmers & Landowners Panel, Economic & Tourism Panel and Environmental & Recreational Panel and about individual membership.



# Young Observers 2007



Team building activity at the Kippure House Estate.

## This initiative marks the 10 year anniversary of the Wicklow Uplands Council and Irish Uplands Forum.

Wicklow Uplands Council has had the idea to run a project with young people for a long time. The late Adrian Phillips in particular valued young people, their views, and their ability to find a simple solution to the most complicated issues affecting the wider world. On many occasions Adrian said that Wicklow Uplands Council will get close to its full potential only by involving young people in its activities. That is how the idea to run this youth project was borne and developed further over the last year. We took the opportunity to design the project especially for Transition Year (TY) students, who have a one year opportunity to get out-of-school experience in areas of their interests. By targeting secondary schools all over Wicklow and bordering counties we were hoping to attract students interested in countryside recreation and outdoor pursuits. We enlisted 25 TY students from five secondary schools willing to take part in our Young Observers 2007 project. The core of the programme was a three day residential workshop, an action project and a follow-up presentation. During the workshop we offered a unique experience featuring various site visits, talks and outdoor activities based in Wicklow/Dublin uplands. In return we got a vibrant group of young people who enjoyed the programme. Participants became aware of our beautiful landscape and gained appreciation of the fragile natural environments and natural heritage of the Wicklow/Dublin uplands and an understanding of how they can be protected and sustainably managed in the future. They also explored how the



Wicklow Mountains National Park's ranger Ann Fitzpatrick demonstrating Glen of Imaal Mountain Rescue operation.

needs of countryside users and stakeholders can be accommodated and became aware of future needs and interests of farm families. Fun activities such as African drumming, star gazing and team building games were very popular. Glencree Centre for Peace and Reconciliation was our partner in facilitation and hosting of the workshop. The main elements of the workshop programme were:

- Talks on Countryside Recreation in Wicklow/Dublin uplands by Helen Lawless and Cara Doyle.
- Visit to Wicklow Mountains National Park hosted by conservation ranger Ann Fitzpatrick.
- Rock climbing games in Kippure House Estate.
- Tour of the Maguire's Farm in Glencullen led by Philip Maguire, linked with walk to historical monuments and meeting other farmers.
- Talk on peace by Glencree staff member Conn Mulvenna.
- Talk and slide show on mountaineering by Frank Nugent.

During the workshop, participants were encouraged to develop their own ideas for an action project, which they presented at Avondale House on the 10th of May 2007. On this occasion each participant received the Adrian Phillips Award in the form of a certificate. Action projects developed by school teams include:

1. Booklet about recreational activities in Glendalough & Laragh for local people, including Leave No Trace ethics and promotion of bus services (Avondale Community College, Rathdrum).
2. Promotional video on hillwalking for primary schools including Leave No Trace (St Kilian's Community College, Bray).
3. Organising a talk with Ian Davis on PURE project and Leave No Trace for junior students (1st and 2nd year) and feedback in form of art competition. (St Thomas's Community College).
4. A guide to potential sport and recreational activities in Wicklow uplands (East Glendalough School, Wicklow Town).
5. Support network for young people wishing to take up countryside recreation; 'Dubs out of pubs' – (Pearse College, Crumlin).



Participants from St. Kilian's Community College working on their Action Project.

This pilot youth project developed by the Wicklow Uplands Council proved to be a successful and well received by the TY students. We are looking forward to on-going contact with our new friends and to hearing about their progress on the action projects. Our ambition is to create a youth network and establish a Young Observers' forum for the Wicklow Uplands Council. We believe that this project has the potential to develop innovative ideas and links with direct benefit for the Wicklow Uplands Council and our partners.

# WICKLOW DUBLIN MOUNTAINS BOARD

## INITIATIVE TO INCREASE BIO-DIVERSITY BY REINTRODUCING BEST VEGETATION MANAGEMENT PRACTICE IN THE WICKLOW UPLANDS

On behalf of its members, the Wicklow Dublin Mountains Board and the Wicklow Uplands Council requested the Minister for the Environment, Heritage and Local Government, Dick Roche TD, to sanction a review of the current vegetation management regime that would allow for the lengthening of the vegetation burning season, thus enabling the reintroduction of best practice in the uplands of Ireland. A carefully prepared proposal including recommendations in regard to legislation and procedural change was submitted to the minister. We are hopeful that this matter will be considered as soon as possible and that in effect best practice will be re-introduced to the uplands. The proposed legislation should differentiate between 'hedgerows' and 'ground cover vegetation' and between ground cover below 700 feet (210 m) and those above, in terms of vegetation management season as follows:

- Hedgerow management to be permitted between 1st September and last day of February.
- Ground cover vegetation management to be permitted in uplands (above 700 feet (210m) above sea level) between 15th September and 15th April.
- Ground cover vegetation management below 700 feet to be permitted between 1st September and 15th of March.

A viable vegetation management model needs to be adopted based on the most up to date scientific research and best practices in neighbouring countries such as Scotland and Wales (e.g The Muirburn Code). The vegetation management model should aim for improvement of heathland habitats and consequently biodiversity. It is essential to allocate support for vegetation management on uplands and in areas which do not have the labour force required for appropriate management. It is also necessary to provide manpower resources to help landowners to carry out controlled burning by best practice. A full copy of the vegetation management proposal is available on the Wicklow Uplands Council website [www.wicklowuplands.ie](http://www.wicklowuplands.ie).

**Murtagh O'Keefe**  
Chairman, Wicklow Dublin Mountains Board



Overgrown heather in Powerscourt Paddock, Djouce Mountain, Co. Wicklow, April 2007.



Traditionally managed heathland in Luggala Estate, Co. Wicklow in 1950s.

## ONE-OFF RURAL HOUSING – A PERSONAL VIEW

One-off housing is a much used but frequently ill-defined term describing a variety of types of isolated development in the rural landscape. Generally in the Wicklow Uplands context we mean houses sited at a distance from other built development, or on former but now obsolete agricultural land or on marginal land. It is, usually, in my opinion a wasteful form of development which imposes unnecessary and unsustainable pressures on many aspects of the environment. Firstly, scattered development uses up a scarce valuable economic resource namely open and undeveloped mountain landscape. In mountainous and upland areas like Wicklow such semi wilderness forms one of the core visitor/tourist attractions. Recent research by many authorities show a strong adverse reaction to dispersed rural development.... "It is changed.... There are houses everywhere now... Where is the green Ireland?"

Building on previously undeveloped land is irreversible – once done it is forever – the natural and semi-natural ecosystems cannot be recovered. They are fragile, vulnerable and crucially they are vital to the nation's well being from, to mention only a few, the environmental, ecological, visual, economic, psychological and spiritual points of view. We are currently consuming this irreplaceable resource at a highly unsustainable rate. One-off housing imposes a disproportionately high load on the local infrastructure. Each site has to be serviced by roads, drainage, power and water supplies, each more costly than the equivalent function in a clustered development. Dispersed housing results in significantly increased vehicle movements with consequent negative environmental effects. Stand alone drainage treatment systems inevitably result in an eventual degradation of the local ground water quality.

From a societal view point one-off housing is less desirable than nucleated forms. It is isolating and not conducive to the formation of

well functioning communities. This is especially true of holiday or second home development where buildings – frequently of a style and suburban design alien to indigenous forms sit pretentious and vacant for most of the time. This is also true albeit to a lesser extent, of commuter driven one-off housing where the occupants, barely residents, leave early and return late with their crechelings having spent their active time in some far off employment centre.

In the context of the one-off rural housing discussion it cannot be considered to be anything but a wholly reasonable aspiration for members of the farming community to provide land in the form of building sites in order that members of their immediate families should continue to reside in the vicinity of the family farm. This said it is equally reasonable to state that (despite the ill informed ramblings of would be developers of Dublin's City Parks) no one has an absolute and unfettered right to build what and where he or she likes. Issues of the Common Good, environmental sustainability and the quality of what we leave to our grandchildren apply. Farmer's sons and daughters should be able to build on the family lands. There is no doubt about this but how they do it requires careful thought and a certain willingness to compromise. New houses should be well integrated into the landscape not ostentatious trophies stuck on hill tops to display their owners impression of his own worth. New houses should tend towards nudation or clustering with other family houses or buildings. Natural or established features should be retained and incorporated into the design. A little architectural modesty is no bad thing. One-off housing is not necessary – it is greedy, and we must care more for the kind of environment and heritage we leave to succeeding generations.

**Pat Ewen**  
Wicklow Dublin Mountains Board



# WICKLOW DUBLIN MOUNTAINS BOARD

## THE FOREST SERVICE INTRODUCES NEW FOREST ENVIRONMENT PROTECTION SCHEME

A new initiative under the Rural Development Regulation is the opportunity for EU Member States to adopt a measure focusing on the creation and enhancement of high nature value forest. The Forest Service has designed a new Forest Environment Protection Scheme (FEPS) which aims to encourage the establishment of high nature value forestry on REPS farms. By providing a top-up premium in these cases, comparable to the REPS premium, which is lost by planting, a major obstacle to the better integration of Forestry and REPS has been removed. In addition to the normal forestry premium highlighted below, an additional payment of up to €200 per hectare per annum, for a 5-year period like REPS, has been introduced. A viable crop of timber remains a key objective of FEPS, but there is provision for more open space, a greater proportion of broadleaves and improved habitats etc., compared to the main afforestation scheme. This is an innovative scheme and interest is expected to be high. The scheme will run on a pilot basis in the first half of 2007 to test demand. The existing premium rates are highlighted in Table 1 below.

Table 1: Forest premium payment schedule.

Category (GPC)	Farmers Premium – Annual Payment Available from 1/1/07			Non Farmer's Premium
	Plantations less than 6ha	Plantations more than 6ha	Plantations more than 12ha	
	€ per Hectare	€ per Hectare	€ per Hectare	€ per Hectare
Unenclosed Land	240.94	240.94	240.94	197.12
Sitka spruce/ Lodgepole pine	386.95	401.56	416.16	197.12
20% Diverse Mix	449.74	464.35	478.94	197.12
Diverse	478.94	493.55	508.15	197.12
Broadleaf (except Oak and Beech)	508.15	522.76	537.35	211.73
Oak	544.65	559.26	573.86	211.73
Beech	544.65	559.26	573.86	211.73

\*Areas under 8ha are not eligible for additional FEPS payments.

Table 2: Current grant aid for Afforestation - € per hectare from 1/9/06

Category (GPC)	Afforestation Grant	Second Instalment Grant	Total Grant
	€ per Hectare	€ per Hectare	€ per Hectare
Unenclosed Land	2540.65	873.35	3414.00
<i>Enclosed and Improved Land</i>			
Non-diverse Conifers Sitka spruce & Lodgepole Pine	2540.65	873.35	3414.00
20% Diverse Mix	2699.60	873.40	3573.00
Diverse Conifers	2984.52	942.48	3927.00
<i>Broadleaf</i>			
Approved Species Other than Oak/Beech 100% stocking	3999.67	1,199.90	5199.57
Oak 75%-100% Stocking	5259.25	1660.82	6920.07
Beech 80%-100%	5738.87	1865.13	7604.00

\*Diverse species include Scots Pine, Douglas fir, Japanese Larch, etc.

Assistance to farmers and landowners for afforestation projects has never been better and a free forest advisory service is also available through local Teagasc offices. Contact Forest Service, Johnstown Castle Estate, Co Wexford at LoCall 1890 200223 for further information.

Pat Farrington  
Forest Service  
Wicklow Dublin Mountains Board

Articles available on [www.wicklowuplands.ie](http://www.wicklowuplands.ie)  
• Rural Security • Vegetation management proposal

## AN APPRECIATION OF LEADER + AND WICKLOW RURAL PARTNERSHIP

As the LEADER+ Programme draws to a close, Wicklow Uplands Council is reflecting positively on its involvement with Wicklow Rural Partnership in various projects over the last five years. This involvement has made projects and other funding available to Wicklow Uplands Council and has also involved the two organisations working together. We acknowledge this crucial support and partnership gratefully.

Specifically, LEADER+ Programme funding has enabled Wicklow Uplands Council to progress valuable projects in the area of research, tourism, training and youth initiatives. Included are: researching the feasibility of Bunkhouse Barns as alternative accommodation; a trail user survey and the development of a Wicklow Countryside Access Service.

Specific training initiatives supported involved the board of the Uplands Council and a new schools Transition Year project entitled 'Young Observers 2007'. This is a training

programme which enabled young people to connect/reconnect with the local landscape and to become more aware of the fragility and quality of the natural and built uplands environments. Currently, Wicklow Rural Partnership is also supporting our Village Interpretive Panel project (see elsewhere in this newsletter).

The future looks positive with the Rural Development Programme 2007/2103 due to unfold later this year. Early indications suggest an increased budget for County Wicklow and we look forward to working with Wicklow Rural Partnership in furtherance of our mission:

*'To promote the sustainable use and enjoyment of the Wicklow Uplands in partnership with the people who live, work and recreate there.'*

Colin Murphy  
Director

## STAFF MATTERS

### Cara Doyle

In March 2006, we took our leave of our Project Officer Cara Doyle, who has decided to begin a new life in New Zealand. Cara was an exceptional colleague and friend who tackled all tasks with enthusiasm and zeal, especially the most difficult ones. Her stewardship of our Access and Sustainable Trails projects was particularly outstanding and will become something of a legacy of her work with us. We gave Cara a good send off, accompanied by a Celtic silver cross as a memento and look forward to hearing news of her Antipodean progress.

### Helen Lawless

We were very pleased that the selection process that was necessitated by Cara's departure resulted in the appointment of Helen Lawless as her successor. Helen, who has a brand new title of Countryside Recreation Officer, is a long time friend and supporter of the Council. She comes to us from the Mountaineering Council of Ireland, where she was Development Officer. Helen has wide knowledge and experience of the outdoor recreation sector and is an experienced walker. Moreover, Helen is an uplands resident with a farming background! We welcome Helen as a Wicklow Uplands Council colleague and look forward to drawing on her experience, expertise and enthusiasm.

### Lenka Mulligan

Lenka Mulligan, who joined us in June 2006 as Development Officer, became full time in January 2007. Alongside her role as editor of this newsletter and our website [www.wicklowuplands.ie](http://www.wicklowuplands.ie), Lenka is responsible for researching the vegetation management proposal, the Young Observers 2007 project and the Village Interpretive Panels Project.

**Colin Murphy**  
Director

## SHEEP KILLED NEAR ENNISKERRY

The Farming and Landowner Panel of the Wicklow Uplands Council would like to remind all dog owners in the county of their responsibility to control their dogs at all times. A dog should never be allowed off their owner's property unless it's on a lead and under full control of the owner. It has been brought to the attention of the Board that there has been a number of incidents where sheep were chased, injured and killed in the Ballybrew area, north Wicklow. Such incidents cause a large amount of stress throughout the entire flock and can lead to a substantial financial loss to the farmer. Where dogs are seen out under no control the authorities should be contacted; a dog warden service is provided by the county councils in each county. All dogs, big or small, have the potential to do harm to sheep or their lambs.

**Philip Maguire**  
Wicklow Uplands Council  
Board Member

## WICKLOW SUSTAINABLE TRAILS NETWORK PROJECT WINDING DOWN



The Wicklow Sustainable Trails Network (WSTN) is a partnership project involving all the key stakeholders and major landowners along the Wicklow Way and St. Kevin's Way. The project was initiated in July 2004 to co-ordinate active management of the Wicklow Way, St Kevin's Way and other trails in the Wicklow region and to outline a plan for development, management and promotion of these routes. Wicklow Uplands Council has managed the WSTN project on behalf of the project partners. The three-year project, which was 50% funded by Fáilte Ireland through the European Regional Development Fund, is now drawing to a conclusion.

Before Cara Doyle left Wicklow Uplands Council at the end of February she completed a five-year Development, Management and Promotional Plan for the 'Wicklow Trails Network'. It provides a clear road map for the future, including a detailed work plan for the next five years. This plan is based on best international recreational and environmental practice, while also reflecting the varied interests and concerns of statutory and non-statutory stakeholders, including local farmers, property owners, local development groups and recreational users. The plan recommends that the Wicklow Trails Network is managed with a focus on sustainability; encouraging a healthy local population and managing visitor pressures from the greater Dublin area. The WSTN Committee will be meeting shortly to discuss implementation of the plan.

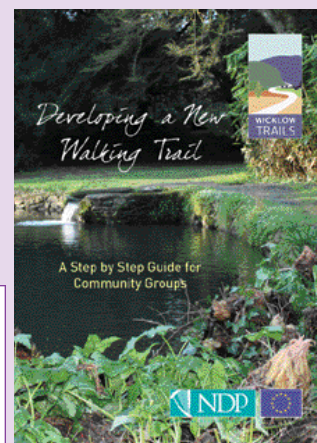
As part of the WSTN project, a step-by-step guide to developing a new walking trail was produced earlier this year. This

attractive and practical booklet has been circulated to community groups throughout Wicklow and is also available from the Wicklow Uplands Council Office. One of the final actions within the WSTN project is development of a Wicklow Trails website, work is currently underway on this in conjunction with Wicklow County Council.

WSTN's proactive and co-ordinated approach to trail management has resulted in a marked improvement on the long distance walking routes in Wicklow over the past three years. This experience puts Wicklow in a strong position to capitalise on national initiatives such as the recently published Irish Trails Strategy, the work of Comhairle na Tuaithe, Fáilte Ireland's new funding programme for recreational infrastructure and the 2007-2013 Rural Development Programme.

Wicklow Uplands Council looks forward to playing a role in this process for the benefit of all local people, visiting recreational users and the natural environment.

**New guide to development of a community walking trail available on [www.wicklowuplands.ie](http://www.wicklowuplands.ie)**





## WALKING AND TALKING IN GLENMALURE



Left to right: Courtney Cook, Dermot Hand, Joe Walker, John Power, Neilie O'Leary, Joss Lynam and Declan O'Neill at the Walk & Talk event in Glenmalure.



Wicklow Uplands Council's Board Directors Richard More-O'Ferrall and Murtagh O'Keefe at the Walk & Talk event.



Shay Walsh from Mountain Meitheal talking about path construction in Glenmalure.



Mutagh O'Keefe and Peter McGrath.

On Saturday 10th March almost 60 people gathered in spring sunshine outside the Glenmalure Lodge. After a short bus transfer up the valley, Pat Dunne welcomed the group to his farm at the foot of Carrawaystick Brook waterfall. Pat explained the plans to develop an access route using a newly constructed footbridge to divert walkers away from the front door of a cottage owned by his family and then back onto the well-known zig-zag track up towards Cloghernagh and Lugnaquilla.

This route is one of the first to be developed as part of the Wicklow Countryside Access Service (WCAS) project. WCAS is a joint Wicklow Uplands Council and Wicklow Rural Partnership (WRP) project, which is supported financially by LEADER, Comhairle na Tuaithe and Wicklow County Council. Over a period of three years the project aims to establish, with the agreement of landowners, a network of 20 walkers' access routes across private land. These are permissive routes, not public rights of way. Participating landowners are offered the opportunity to be paid to carry out the restoration work required on the route. As part of the arrangement Wicklow County Council will undertake insurance of the route, once it meets standards required by the National Trails Office.

On the Glenmalure route the bulk of the work is being done by the voluntary footpath repair crew, Mountain Meitheal. Shay Walsh, Chair of Mountain Meitheal, gave a brief introduction to their organisation, described the plans for the wooden footbridge and led the group up the track to see the drainage work which has already been done. The original zig-zag track was built over 150 years ago as a hunting path for Charles Stewart Parnell's Avondale Estate, today it is used mainly by hillwalker's heading towards Lugnaquilla.

Later at the Glenmalure Lodge, Wicklow Uplands Council Chairman Dermot Hand presented an Honorary Membership Award to long-serving board member, Saive Coffey. Special guest Neilie O'Leary, Chair of IFA's Hillfarming Committee, addressed the gathering and took questions from the floor on the IFA's position regarding recreational access to private land. The healthy debate gave everybody an appetite for the excellent lunch which followed. Wicklow Uplands Council extends thanks to all those who helped in hosting this valuable networking event, particularly Neilie O'Leary who travelled from west Cork, the Dunne family, Mountain Meitheal and the owners and staff of the Glenmalure Lodge.



David Rowe, Tim Kyne, Cllr. Tom Fortune and Brian Kehoe at the Walk & Talk event.



Participants walking at the Zig Zag path in Glenmalure.



## BOARD MEMBERS 2006-2007

### FARMING AND LANDOWNING PANEL

Seán Byrne (Hon. Treasurer)	Farmers and Property Owners Association
Saive Coffey	Wicklow County IFA
Pat Dunne	Wicklow County IFA
Philip Maguire	South County Dublin Rural Preservation Group
Seán Malone	Cheviot Sheep Owners Association
Murtagh O'Keeffe (Vice-Chair)	Cheviot Sheep Owners Association
John Power	Roundwood IFA

### ENVIRONMENTAL AND RECREATIONAL PANEL

Pearse Connolly	Mountaineering Council of Ireland
Pat Ewen	Motor Cycle Union of Ireland
John Flynn	County Wicklow Game Preservation Council
Philip Geoghegan	An Taisce

### COMMUNITY PANEL

Stephen Bray	Blessington & District Community Council
Claire Chambers	Roundwood & District Community Council
Brian Kehoe	Wicklow Rural Partnership
Eileen Kennedy	Glencree Centre for Reconciliation

### ECONOMIC AND TOURISM PANEL

Peter Galvin	Wonderful Ireland
Tim Kyne	Kippure House Estate
Richard More-O'Ferrall	Jigsaw Cottage Guest House

### CO-OPTIONS

Donal Anderson (Hon. Secretary)	
Dermot Hand (Chair)	
David Rowe	
Joe Walker	

### WICKLOW UPLANDS COUNCIL

Wicklow Uplands Council is an independent, voluntary organisation with charitable status. The Council provides a forum where interested non-statutory organisations and individuals can have their say in the decision making process affecting the sustainable development of the local environment in the spirit of Local Agenda 21. The Council was formally established in January 1997 and has since endeavoured to implement its core mission:

#### MISSION STATEMENT

'To promote the sustainable use and enjoyment of the Wicklow Uplands in partnership with the people who live, work and recreate there'.

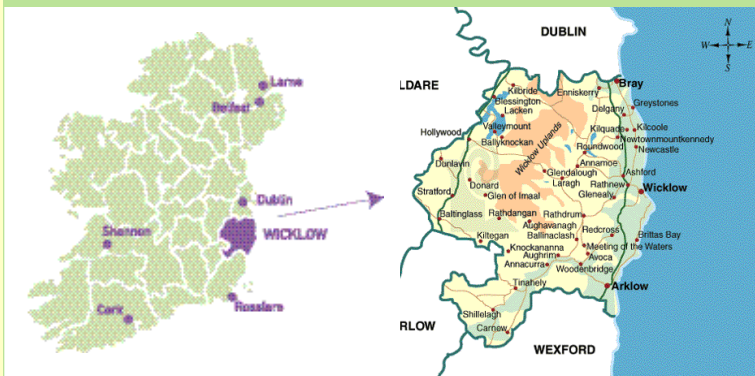
#### WICKLOW UPLANDS COUNCIL SEEKS TO

- Build consensus and trust
- Foster a partnership approach to sustainable development
- Manage/transform conflict
- Protect and enhance the uplands environment
- Undertake initiatives with support from the local people
- Engage in initiatives that make economic sense

#### STAFF

**Director:** Colin Murphy    **Countryside Recreation Officer:** Helen Lawless  
**Development Officer:** Lenka Mulligan    **Administration Officer:** Margaret Murphy

Wicklow Uplands Council focuses on issues affecting the Wicklow Uplands



For further information please contact us at:  
**WICKLOW UPLANDS COUNCIL LTD.,**  
 SAVILLE HOUSE, RATHDRUM, CO. WICKLOW, IRELAND  
 Tel: +353 404 43958 Fax: +353 404 46995  
 Email: [info@wicklowuplands.ie](mailto:info@wicklowuplands.ie) Website: [www.wicklowuplands.ie](http://www.wicklowuplands.ie)



Colin Murphy  
Director



Helen Lawless  
Countryside Recreation Officer



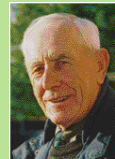
Lenka Mulligan  
Development Officer



Margaret Murphy  
Administration Officer



Dermot Hand  
(Chair)



Murtagh O'Keeffe  
(Vice-Chair)



Seán Byrne  
(Hon. Treasurer)



Donal Anderson  
(Hon. Secretary)



Saive Coffey



Pat Dunne



Philip Maguire



Seán Malone



John Power



Pearse Connolly



Pat Ewen



John Flynn



Philip Geoghegan



Stephen Bray



Claire Chambers



Brian Kehoe



Eileen Kennedy



Peter Galvin



Tim Kyne



Richard  
More-O'Ferrall



David Rowe



Joe Walker